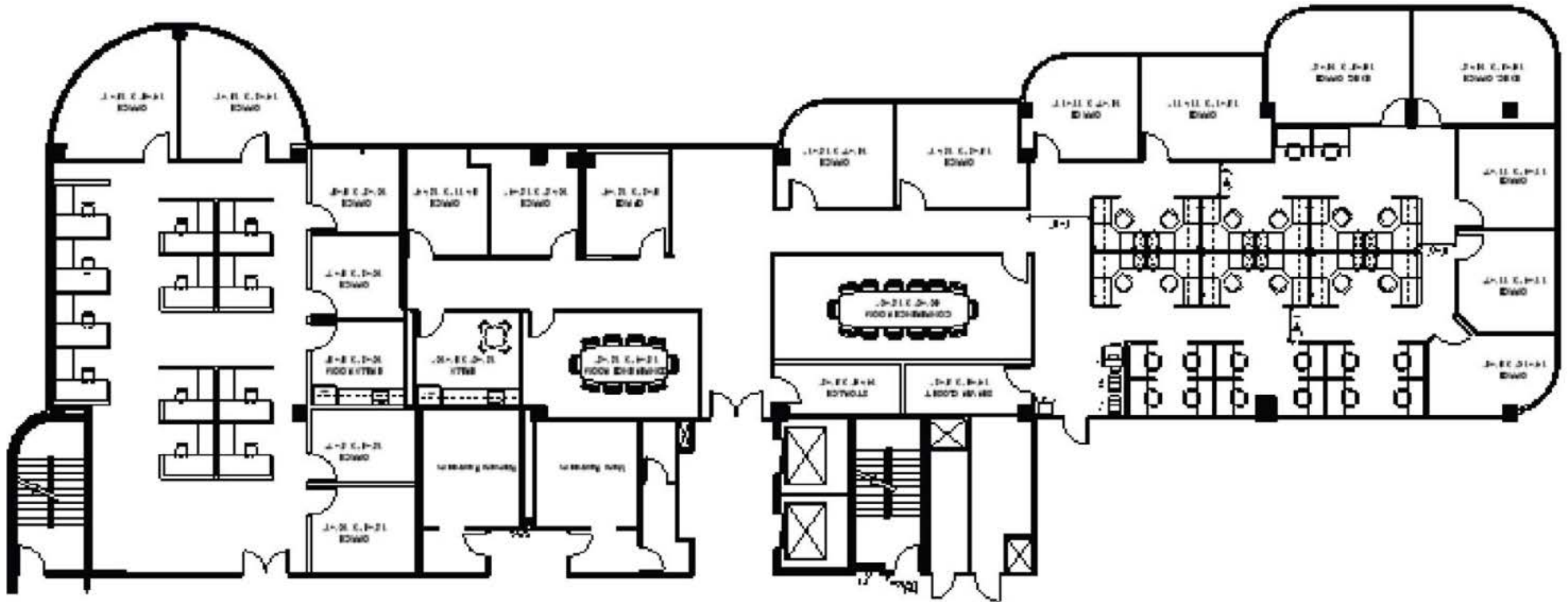




# RADICE I

600 Corporate Drive

SUITE: 502-504 | 8,673 SF



For more information, please contact:

**DEANNA LOBINSKY**

Executive Director

+1 954 377 0489

[deanna.lobinsky@cushwake.com](mailto:deanna.lobinsky@cushwake.com)

**CHASE KULP**

Senior Associate

+1 954 377 0494

[chase.kulp@cushwake.com](mailto:chase.kulp@cushwake.com)

**CUSHMAN & WAKEFIELD OF FLORIDA, LLC**

515 E. Las Olas Boulevard, Suite 900

Fort Lauderdale, FL 33301

[cushmanwakefield.com](http://cushmanwakefield.com)